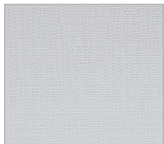


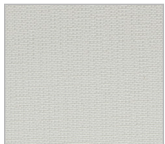
Kenross



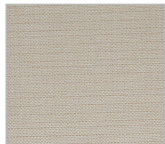
Colour Range



Lace



Light Cream



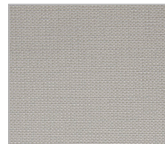
Gazelle



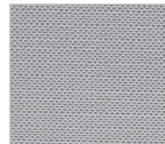
Fog



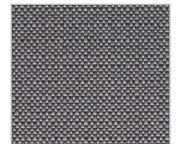
Natural



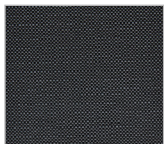
Haze



Dove



Slate



Graphite

Internal Translucent & Blockout Fabric

Roller Blind | Roman Shade | Panel Glide
3.0m width

Kenross

Technical Information

	Translucent	Blockout	
Composition:	100% Polyester with Clear Acrylic Coating	100% Polyester with Clear Acrylic Coating	
Thickness:	0.50mm ± 10%	0.68mm ± 10%	
Weight:	240 gsm ± 10%	450 gsm ± 10%	
Cutting*:	Ultrasonic Cut	Ultrasonic Cut	
Colourfastness:	6-7 Blue Scale (AS 2001.4.21)		
Fire Retardancy Information for NON FR Products[^]:	Suitable for all building classes except Class 9(b) entertainment venues. A summary of BCA requirements can be provided on request. [^] Fabrics which are not FR treated, have been FR tested and have a Flammability result over 6 or fabrics which are not FR treated and have not undergone FR testing.		
Range:	Item:	Width:	Roll Length:
	Translucent - 60010300090XXH	3000mm	30 metres
	Blockout - 60011300090XXH	3000mm	25 metres
Care & Cleaning	Dusting with a feather duster is all that is required to keep your fabric looking good. For the removal of stains, dirt and grime, gently wipe fabric skins with a sponge soaked in lukewarm water. If marks are still visible, add a little detergent. Then dry gently with a clean cloth. Test in inconspicuous area before spot cleaning.		

For more information contact us on:
hdarchitectural@hunterdouglas.com.au